


Caring for you

Contact Us:



www.neusoftmedical.com/en/

 Neusoft Medical Systems

 Neusoft Medical

Address: No. 177-1 Chuangxin Road, Hunnan District, Shenyang, Liaoning, China 110167

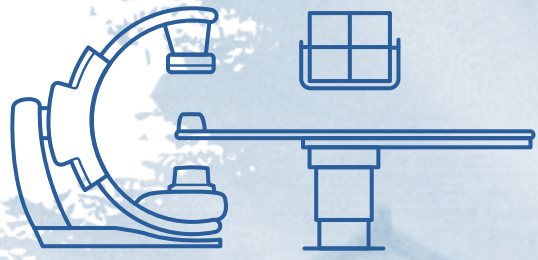


NeuAngio 30F

Medical Angiography X-ray System

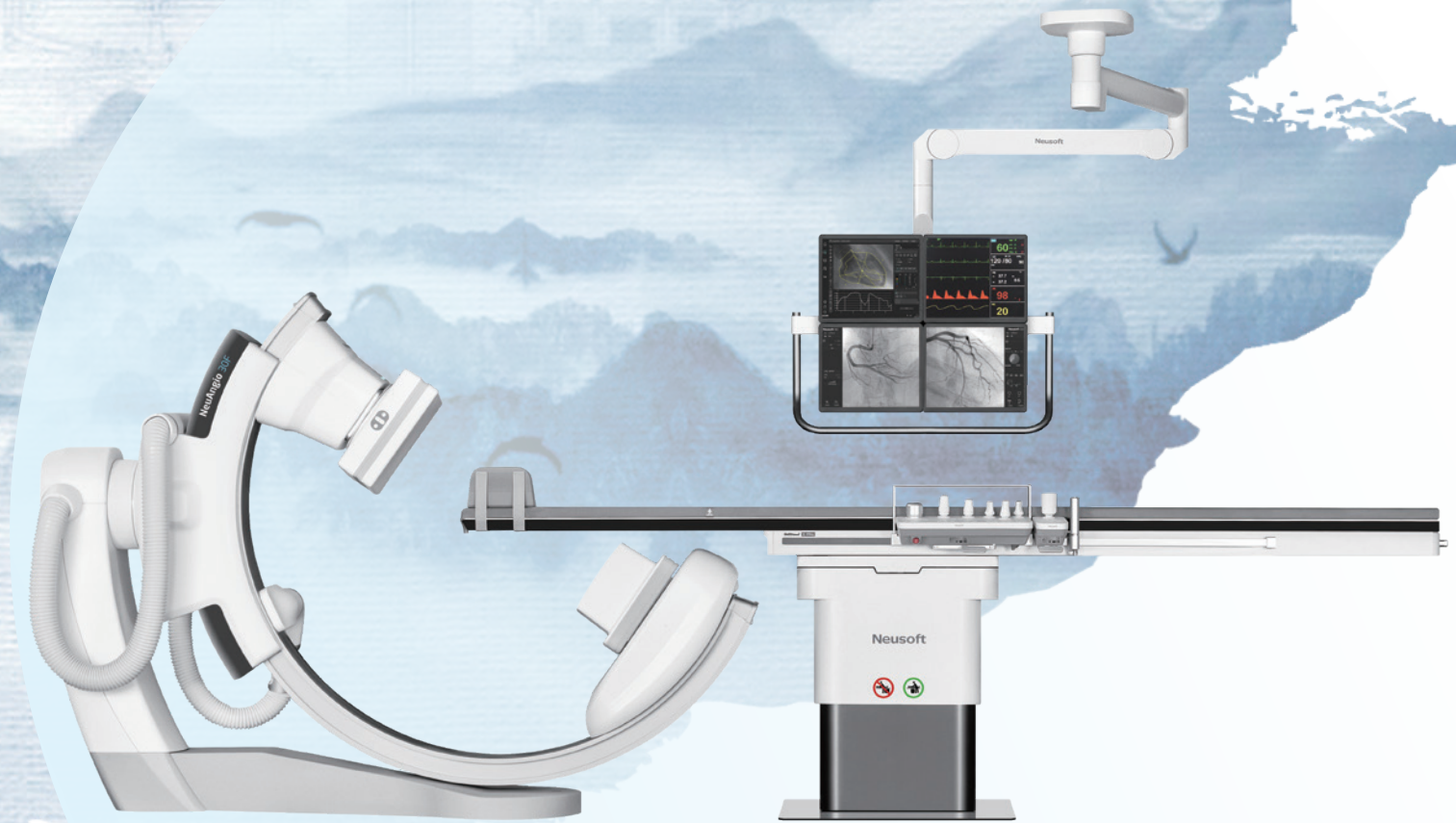
NeuAngio 30F/V 22.04

Neusoft Medical Systems



NeuAngio 30F

State-of-the-art floor mounted angiography system

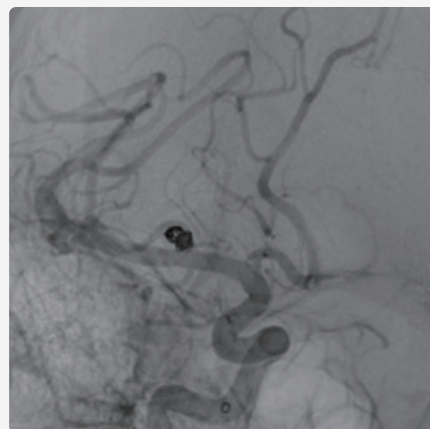




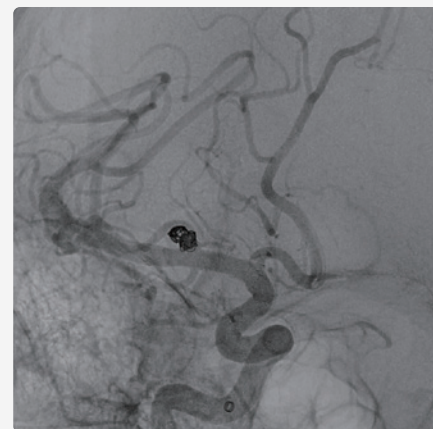
HD Digital Flat Panel Detector

Full **16bit + 2K** digital imaging chain, completing one-stop advanced processing flow of image acquisition, transmission and storage

14bits 1K 308μm ▼

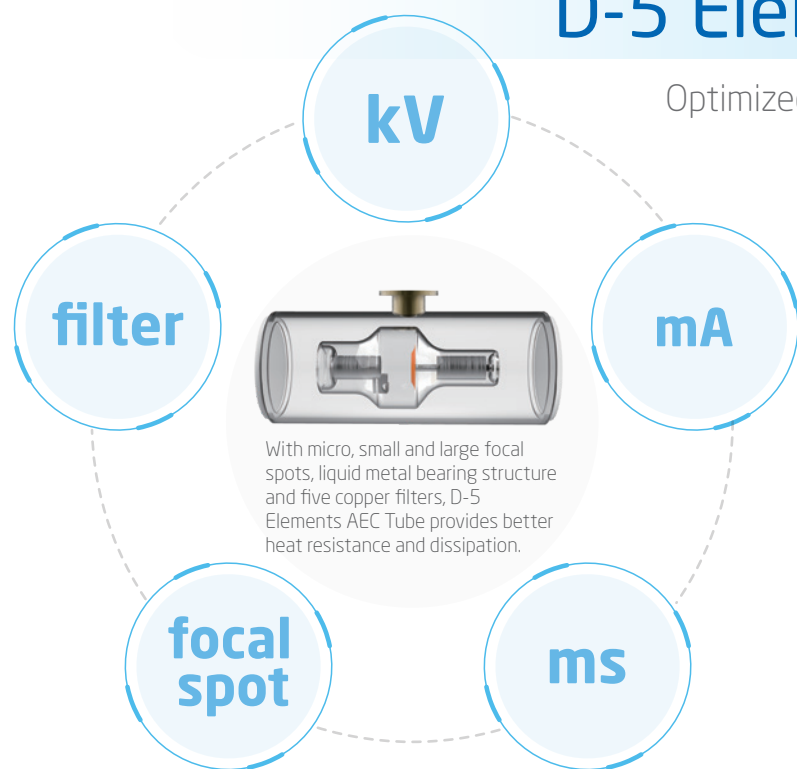


16bits 2K 154μm ▼



D-5 Elements AEC Tube

Optimized balancing between radiation dose and image quality



With micro, small and large focal spots, liquid metal bearing structure and five copper filters, D-5 Elements AEC Tube provides better heat resistance and dissipation.



NeuAngio 30F
State-of-the-art floor mounted angiography system



Hyper Speed C-arm Gantry

Intelligent UI Control Module

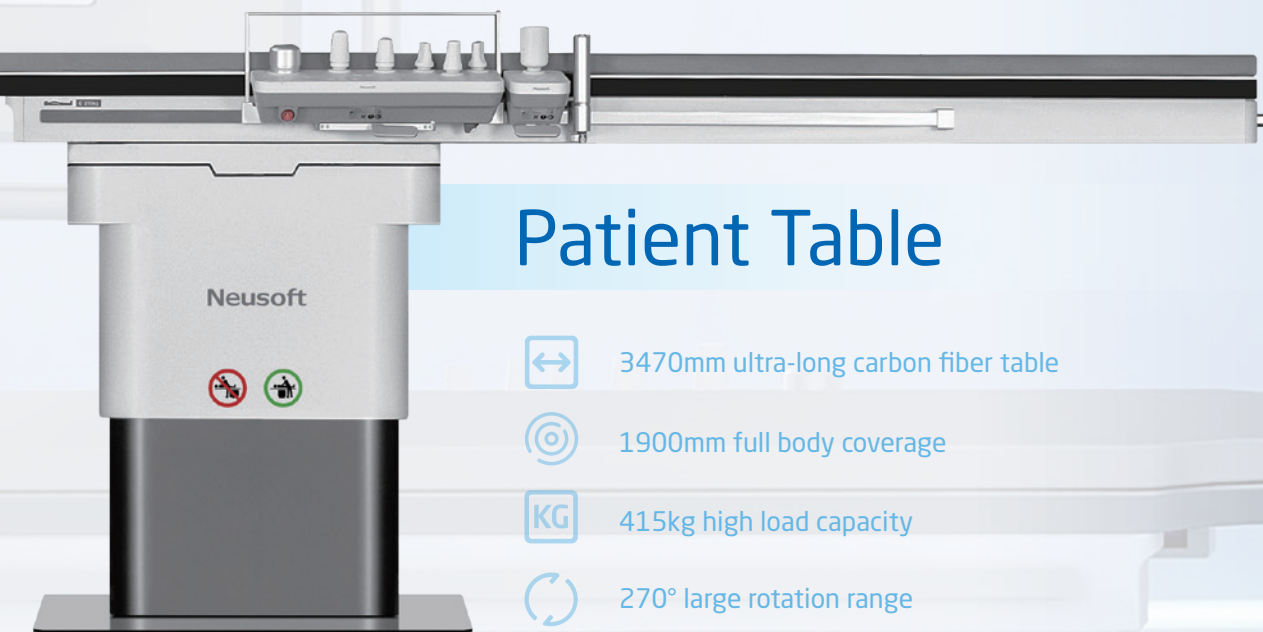


- Multilingual interface
- Simple and efficient

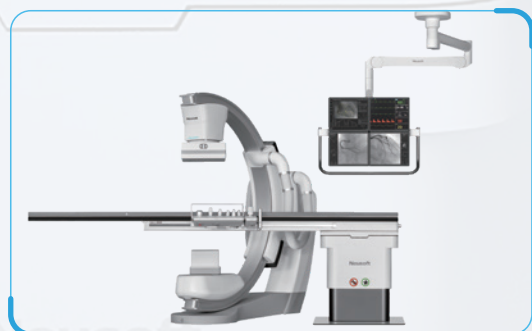


- Concave-convex buttons
- Flexible joystick
- Easy-to-use TMC design
- Equipped with M-Organ Choice

Patient Table



- ↔ 3470mm ultra-long carbon fiber table
- ◎ 1900mm full body coverage
- KG 415kg high load capacity
- ↻ 270° large rotation range



Advanced Clinical Function

NeuAngio 30F
State-of-the-art floor mounted angiography system



- M-ParaVision
- Coronary Swing
- SpinDR/DSA
- Stepping-Composing



- Glorious Stent
- Coronary Swing
- Spin DSA
- 3D
- Dual Volume
- MPR
- Glorious CT*
- Glorious Atlas*



*Trial version, working in progress



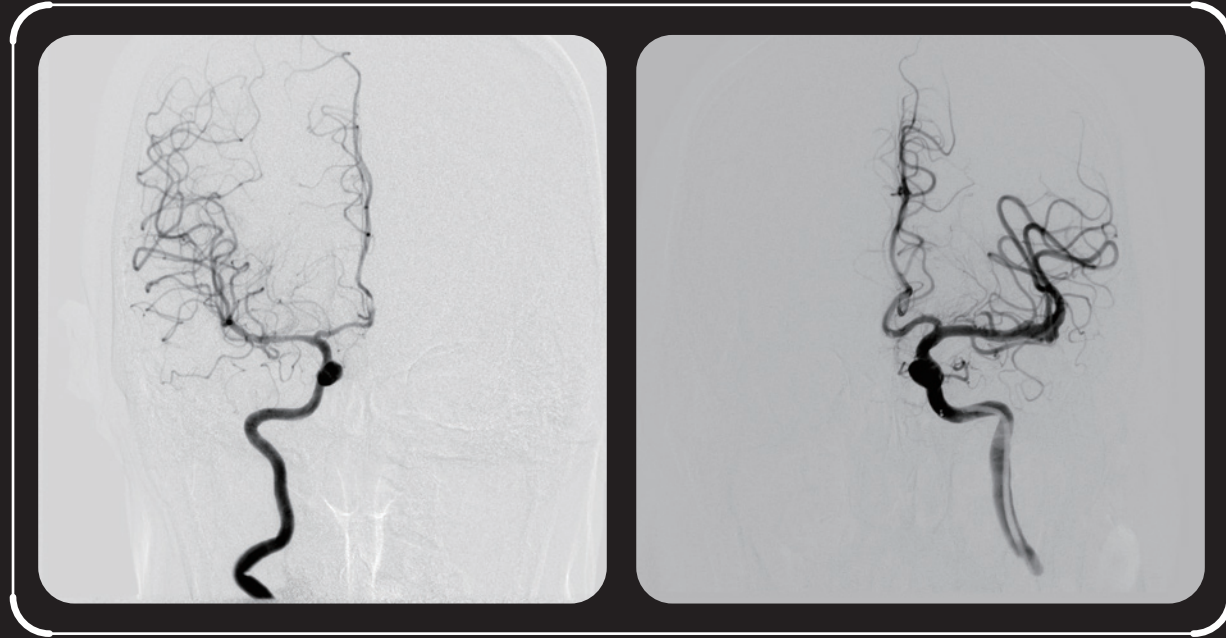
IDM Platform

NeuAngio 30F
State-of-the-art floor mounted
angiography system



Clinical Gallery

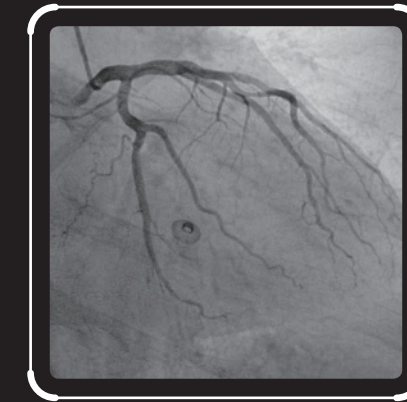
Cerebral Angiography ▼



Lower Extremity Arteriography ▼



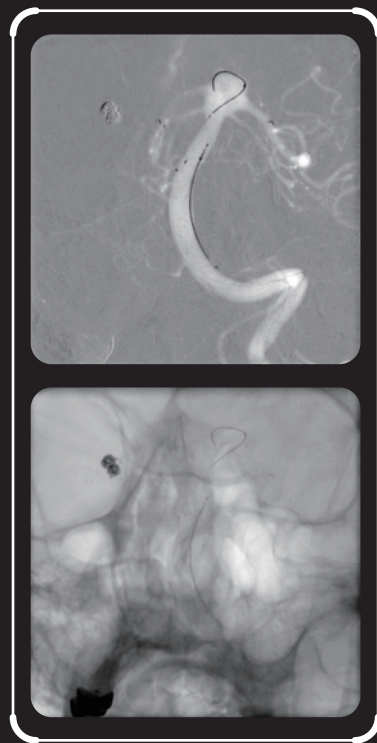
Left Coronary Angiography ▼



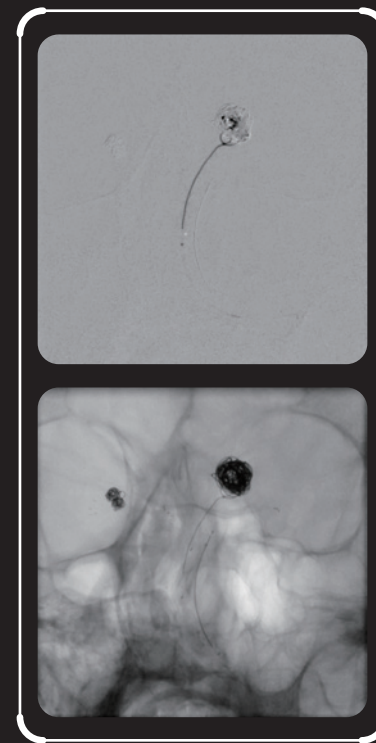
Right Coronary Angiography ▼



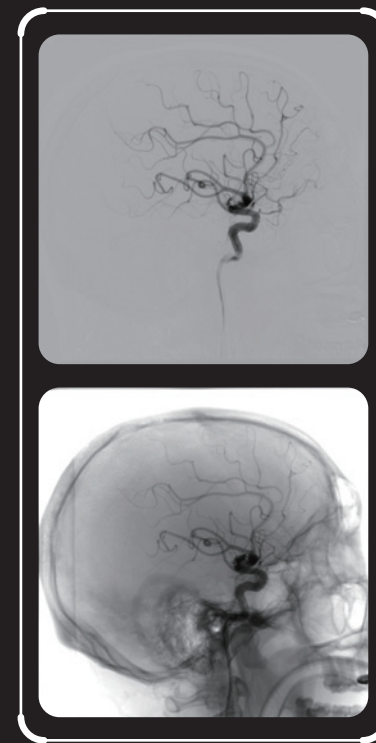
Roadmap ▼



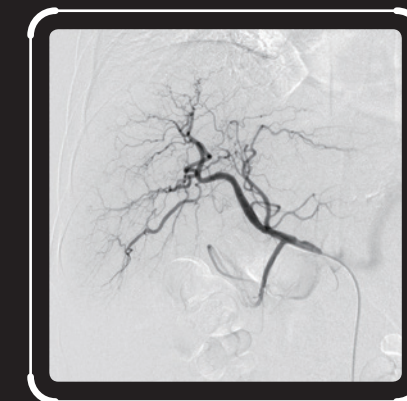
Coil Roadmap ▼



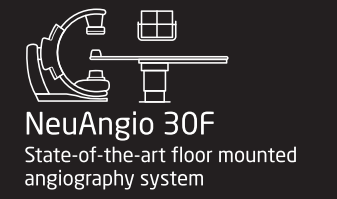
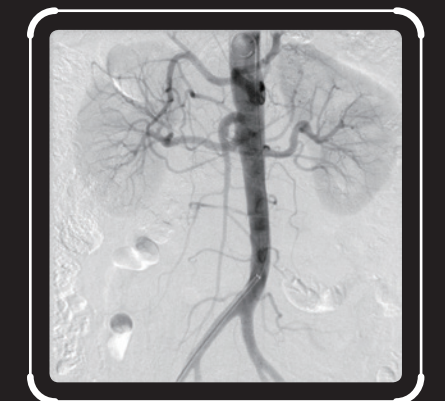
M-ParaDSA ▼



Hepatic Arteriography ▼

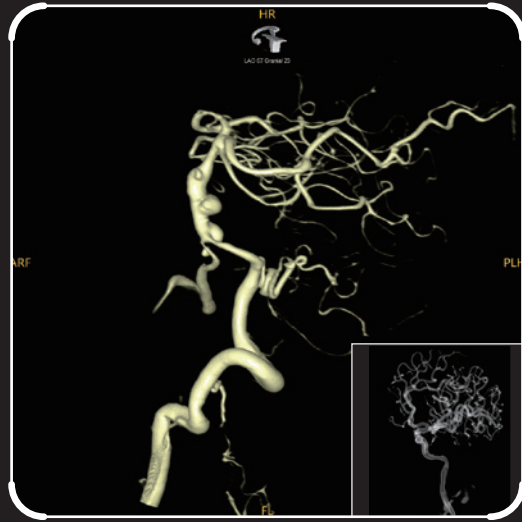


Abdominal Aorta Angiography ▼

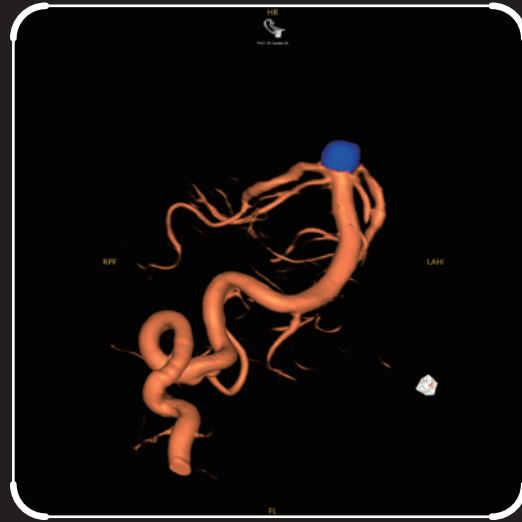


Clinical Gallery

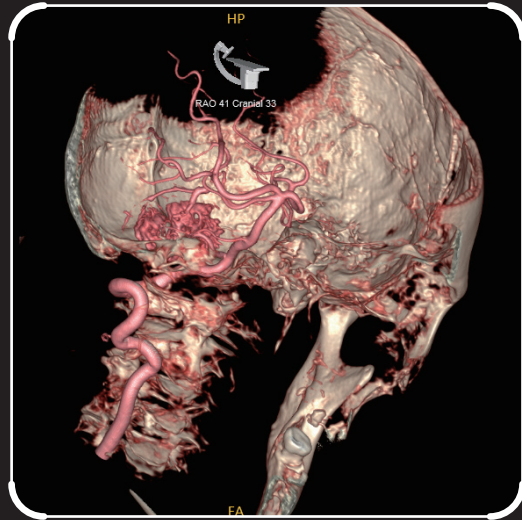
VR ▼



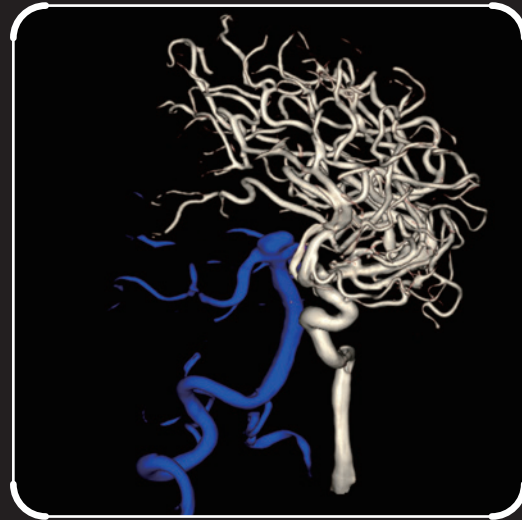
Dual Volume ▼



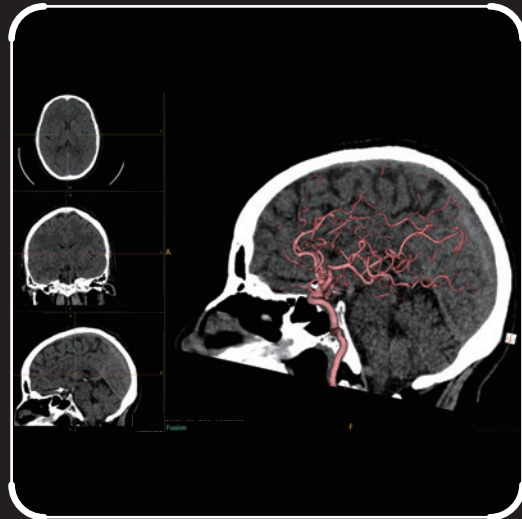
Dual Volume ▼



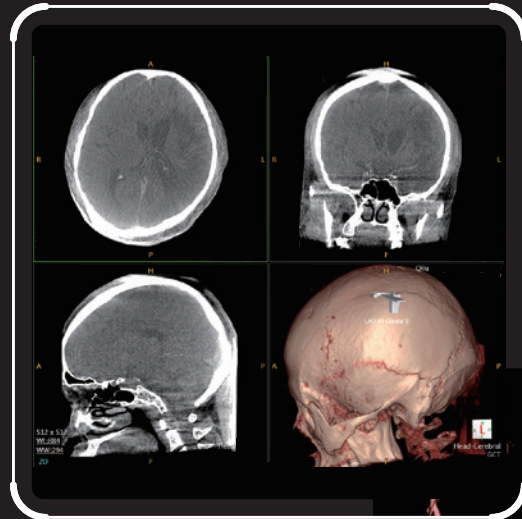
Glorious Dual Vessel ▼



Glorious Fusion* ▼



Glorious CT* ▼

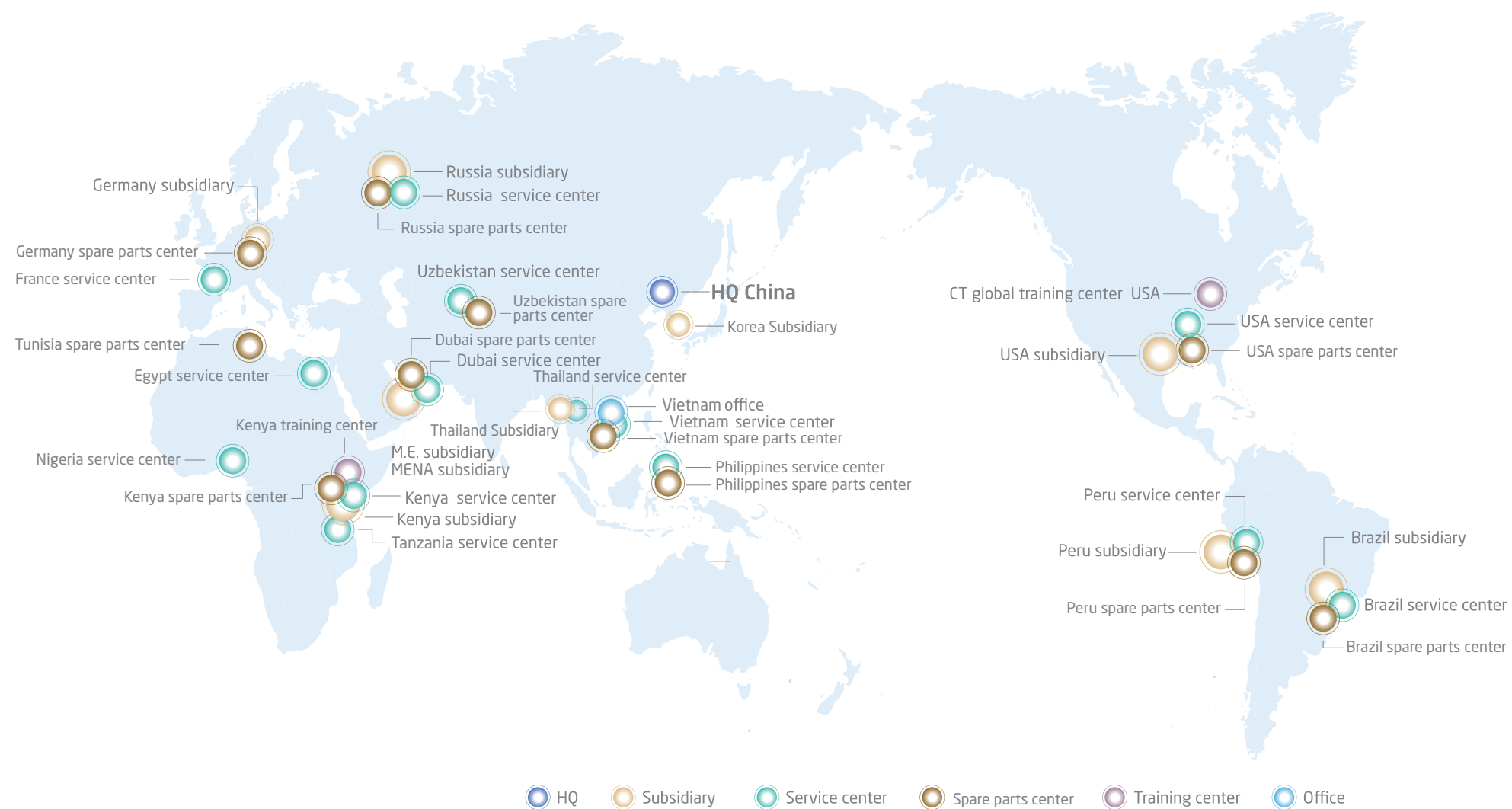


NeuAngio 30F
State-of-the-art floor mounted
angiography system

Glorious

* Optional only

Neusoft Global Service & Logistics Network



After-sales service and support

- Remote service capabilities bring Neusoft expertise to you IMMEDIATELY, no matter where you are!
- Identifying and correcting PROMPTLY and PROACTIVELY, minimizing downtime and patient inconvenience.
- Global logistics network enables fast response regarding parts and supplies.

* Note: The contents of this publication and the listed parameters are for reference only and not intended as legal offers or commitments. Neusoft Medical Systems reserves the right to modify the contents, design, specifications and options described herein without prior notice, and will not be liable for any consequences resulting from the use of this publication. Please contact your local Neusoft sales representative for the current information. The specific sales product configuration is subject to the actual contract signed by Neusoft.

* Not available in the United States.